



Michele Detwiler

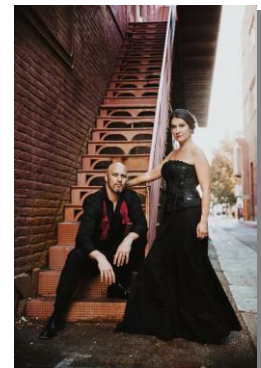
mezzo-soprano

Randsman Artists Management

212.290.2281

randsman@aol.com

www.randsman.com



Role	Opera	Venue	Date
Orlofsky	Die Fledermaus	Mississippi Opera	2023
Flora/Annina	La traviata	MidAtlantic Opera	2022
Javotte	Manon	Taconic Opera	2022
Jade Boucher	Dead Man Walking	Opera Idaho	2022
Cherubino	Le nozze di Figaro	Gemma Arts	2022
Rosette	Manon	Opera Idaho	2019
Suzuki	Madama Butterfly	Opera Idaho	2018
Eunice	Streetcar Named Desire	Opera Idaho	2018
Suzuki	Madama Butterfly	MidAtlantic Opera	2017
Orlofsky	Die Fledermaus	Opera Idaho	2016
Third Lady	The Magic Flute	Opera Idaho	2015
Suzuki	Madama Butterfly	Livermore Valley Opera	2015
Maddalena	Rigoletto	Opera Idaho	2014
Dinah	Trouble in Tahiti	Opera Idaho	2014
Cherubino	Le nozze di Figaro	Stockton Opera	2013
Gertrud	Hansel and Gretel	Opera Idaho	2012
Augusta	The Ballad of Baby Doe	Opera Idaho	2012
La Ciesca	Gianni Schicchi	Stockton Opera	2012
Siebel	Faust	Opera Coeur d'Alene	2011
Rosina	Il barbiere di Siviglia	NW Florida Symp Orch	2011
Suzuki	Madama Butterfly	Livermore Valley Opera	2011
Suzuki	Madama Butterfly	Opera Idaho	2011
Preziosilla	La forza del destino	West Bay Opera	2010
Siebel	Faust	Opera Idaho	2009
Suzuki	Madama Butterfly	Opera San Jose	2007
Flora	La traviata	Opera San Jose	2007
Rosina	Il barbiere di Siviglia	Opera San Jose	2006
Stephano	Romeo et Juliette	Opera San Jose	2006
Zerlina	Don Giovanni	Opera San Jose	2006
Carmen	Carmen	Mission City Opera	2006
Carmen	Carmen	Opera San Jose	2005
Elizabeth Proctor	The Crucible	Opera San Jose	2005
Mary	Der fliegende Holländer	Opera San Jose	2005
Ulrica	Un ballo in maschera	Opera San Jose	2005
Cherubino	Le nozze di Figaro	Opera San Jose	2004
Orlofsky	Die Fledermaus	Opera San Jose	2004
Santuzza	Cavalleria rusticana	Opera San Jose	2003
Dritte Dame	Die Zauberflöte	Opera San Jose	2003
Siebel	Faust	Opera San Jose	2002
Angelina	La cenerentola	Opera San Jose	2002
Suzuki	Madama Butterfly	Opera San Jose	2002
Dorabella	Cosí fan tutte	Opera San Jose	2001

Concert / Musical Theatre

Role	Title	Venue	Date
Soloist	Pergolesi's Stabat Mater	Narnia Festival	2021
Soloist	Haydn's Creation	Boise Baroque	2018
Soloist	Mendelssohn's Elijah	Idaho State Civic Sym	2017
Soloist	Mahler's Das Knaben Wunderhorn	Boise Wind Quintet	2015
Soloist	Berlioz's Romeo et Juliette	Boise Philharmonic	2015
Anna	The King & I	Opera Idaho	2014
Soloist	Beethoven's Ninth Symphony	Boise Philharmonic	2013
Soloist	Mahler Second Symphony	Boise Philharmonic	2012
Soloist	Messiah (Handel)	Boise Philharmonic	2010
Bloody Mary	South Pacific	Opera Idaho	2010
Soloist	Requiem (Mozart)	College of Idaho Chor	2010
Soloist	Gloria (Vivaldi)	Boise Baroque	2010
Soloist	Candide Suite (Bernstein)	Boise Philharmonic	2010
Soloist	Voices of Light (Einhorn)	Boise Philharmonic	2009
Soloist	Die Geburt Christi (Herzogenberg)	Boise Master Chorale	2008
Soloist	Messiah (Handel)	Boise Master Chorale	2007
Soloist	Requiem (Mozart)	Symp. Silicon Valley	2006
Soloist	Messiah (Handel)	Auburn Symphony	2000
Soloist	Songs of a Wayfarer (Mahler)	CSU, Sacramento Orc.	1999
Soloist	Christmas Oratorio (Saint-Säens)	Jackson Comm. Orc.	1998



Biography

Ms. Detwiler has sung over thirty roles with regional companies on the West Coast, favoring Mahler, Strauss, Bel Canto and French repertoire. Critics have described her instrument as "amber-voiced", "a velvety mezzo soprano voice with excellent range", with performances being cited as "riveting" and holding "center stage commandingly".

Since moving to Boise Idaho in 2007 she has performed nearly a dozen characters with Opera Idaho, most recently as Jade Boucher in *Dead Man Walking*. Last season, she reprised Cherubino (*Le nozze di Figaro*) with Gemma Arts, and returned to the Narnia Festival in Italy leading the Emerging Artist Program. Upcoming events include the roles Flora/ Annina (*La traviata*) with MidAtlantic Opera and her debut with Mississippi Opera as Orlofsky.

In addition, the mezzo has sung with Sacramento Opera, MidAtlantic Opera, West Bay Opera, San Francisco Lyric Opera, Mission City Opera, the Boise Philharmonic and Master Chorale, Northwest Florida Symphony Orchestra, Auburn Symphony, Boise Baroque and Symphony Silicon Valley as well as guest and resident artist with Opera San Jose (2002-2007).

Her concert credits include soloist in Haydn's *Creation*, Mendelssohn's *Elijah*, Handel's *Messiah*, Mozart's *Requiem*, Saint-Säens' *Christmas Oratorio*, Mahler's *Songs of a Wayfarer* and *2nd Symphony*, Beethoven's *9th Symphony*, Pergolesi's *Stabat Mater*, Herzogenberg's *Die Geburt Christi*, Einhorn's *Voices of Light*, and her favorite Old Lady in Bernstein's *Candide Suite*, as well as numerous Bach cantatas.

She and her husband, baritone Jason Detwiler live in Boise, Idaho and study with NYC teacher, Andrea DelGiudice.